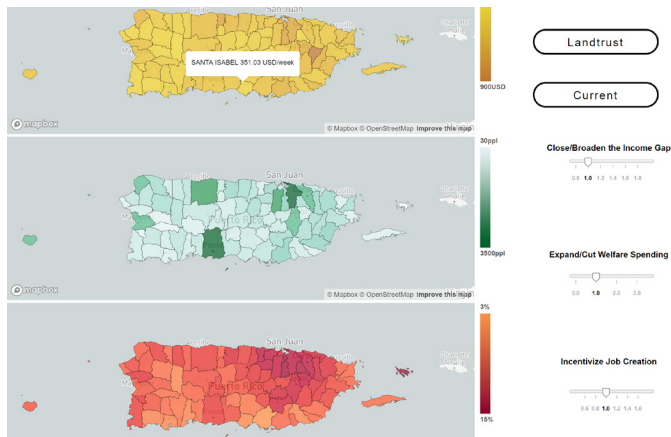
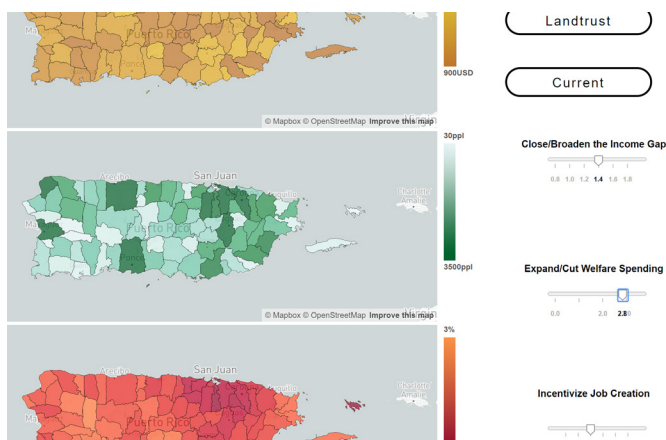


PREDICTING PUERTO RICO

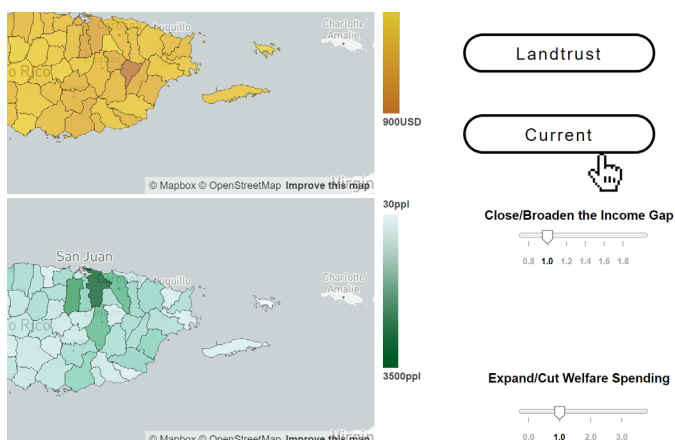
with the anticipated arrival of \$18.5 Billion in disaster relief aid from the federal government sometime this year and general elections for a new government to take place next November, the island of Puerto Rico is set to see significant policy changes in the near future. How this money is spent, and where, will determine which regions of Puerto Rico are likely to prosper and suffer in the near future.



The following three maps display current distributions for income inequality, the number of residents receiving Temporary Assistance to Needy Families (TANF) benefits, and the unemployment rate per municipality. Hovering over a given municipality reveals the exact figure for each of the three maps.



Adjusting the slider allows one to play the part of an administration enacting policies to alter the distribution of resources, capital, and labor across Puerto Rico. For example, one may choose to cut or expand TANF benefits to cover fewer or more families in each municipality. The maps are connected such that changing the value of one slider may change the look of multiple maps.



A set of buttons allows the user to fix the values of the slider to reflect certain prescribed values that correspond to specific hypothetical scenarios that have been proposed for the island's economic and political future, such as Puerto Rico as a collective land-trust of the Caribbean.